

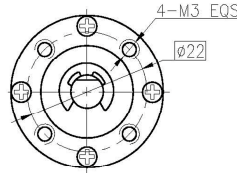
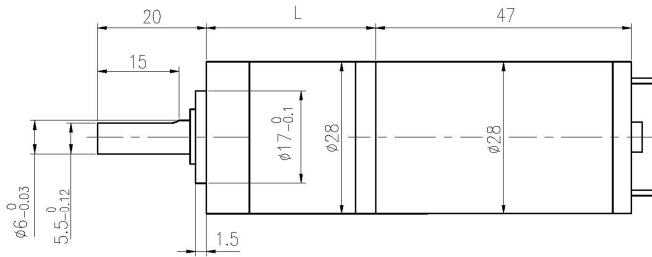
永磁直行星齿轮电机 (内齿圈材质: 金属和粉末金属)

PM DC Planetary Gear Motor (Ring Gear Material: Metal and Powder metal)

Φ28 行星减速器, 允许转矩范围: 0.1N.m~1.0N.m
28JXE10K/28ZY47 28mm OD Planetary Gearbox,
 Permissible Load Range: 0.1N.m~1.0N.m

可在两种材质的内齿圈中进行选择: 粉末金属 (型号 28JXF10K), 金属 (型号 28JXE10K)
 Ring gear can be selected within the two materials: Powder metal (Type: 28JXF10K), Metal (Type: 28JXE10K)

外形和安装尺寸 Dimensions



电动机主要技术参数 Motor Technical Data

| 电机型号 TYPE | 额定电压 Rated voltage VDC | 空载转速 No-load speed r/min | 空载电流 No-load current mA | 额定转速 Rated speed r/min | 额定转矩 Rated torque mN.m | 输出功率 Output power W | 额定电流 Rated current mA | 堵转力矩 Stall torque mN.m | 堵转电流 Stall current A |
|--------------|------------------------------|--------------------------------|-------------------------------|------------------------------|------------------------------|---------------------------|-----------------------------|------------------------------|----------------------------|
| 28ZY47P-2445 | 24 | 4500 | 80 | 3000 | 9 | 2.8 | 270 | 25 | 0.7 |
| 28ZY47P-2460 | 24 | 6000 | 100 | 4500 | 17 | 8.0 | 470 | 65 | 1.8 |

齿轮减速电机主要技术参数 Gear Motor Technical Data

配置 28ZY47P-2445 直流电机 (28ZY47P-2445 DC Motor)

| 减速比 Reduction ratio | 3.7 | 5.2 | 14 | 19 | 27 | 51 | 71 | 100 | 139 |
|---|-------|-------|------|------|------|------|------|------|------|
| 减速级数 Number of gear trains | 1 | 1 | 2 | 2 | 2 | 3 | 3 | 3 | 3 |
| 减速器长度(L) Length(L) mm | 23.6 | 23.6 | 32.2 | 32.2 | 32.2 | 40.6 | 40.6 | 40.6 | 40.6 |
| 空载转速 No-load speed /min | 1213 | 869 | 321 | 237 | 167 | 88 | 63 | 45 | 32 |
| 额定转速 Rated speed r/min | 809 | 579 | 214 | 158 | 111 | 59 | 42 | 30 | 22 |
| 额定转矩 Rated torque N.m | 0.030 | 0.042 | 0.10 | 0.14 | 0.20 | 0.34 | 0.47 | 0.66 | 0.91 |
| 最大瞬间允许负载 Max. permissible load in a short time N.m | 0.3 | 0.3 | 1.2 | 1.2 | 1.2 | 2.5 | 2.5 | 2.5 | 2.5 |

配置 28ZY47P-2460 直流电机 (28ZY47P-2460 DC Motor)

| 减速比 Reduction ratio | 3.7 | 5.2 | 14 | 19 | 27 | 51 | 71 | 100 | 139 |
|---|-------|-------|------|------|------|------|------|------|------|
| 减速级数 Number of gear trains | 1 | 1 | 2 | 2 | 2 | 3 | 3 | 3 | 3 |
| 减速器长度(L) Length(L) mm | 23.6 | 23.6 | 32.2 | 32.2 | 32.2 | 40.6 | 40.6 | 40.6 | 40.6 |
| 空载转速 No-load speed /min | 1617 | 1158 | 429 | 316 | 222 | 118 | 85 | 60 | 43 |
| 额定转速 Rated speed r/min | 1213 | 869 | 321 | 237 | 167 | 88 | 63 | 45 | 32 |
| 额定转矩 Rated torque N.m | 0.057 | 0.079 | 0.19 | 0.26 | 0.37 | 0.63 | 0.88 | 1 | 1 |
| 最大瞬间允许负载 Max. permissible load in a short time N.m | 0.3 | 0.3 | 1.2 | 1.2 | 1.2 | 2.5 | 2.5 | 2.5 | 2.5 |

电动机特性图

