

永磁直行星齿轮电机 (内齿圈材质: 金属和粉末金属)

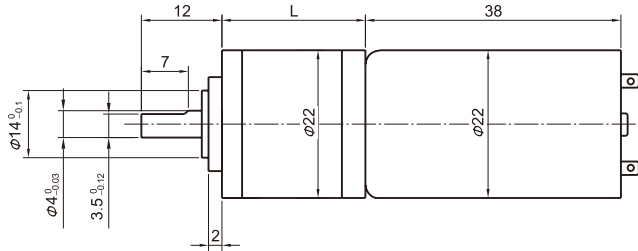
PM DC Planetary Gear Motor (Ring Gear Material: Metal and Powder Metal)

**22JXE3K/22ZY38B**

Φ22 行星减速器, 允许转矩范围: 0.03N.m~0.3N.m  
22mm OD Planetary Gearbox,  
Permissible Load Range: 0.03N.m~0.3N.m

可在两种材质的内齿圈中进行选择: 粉末金属(型号22JXF3K), 金属(型号22JXE3K)  
Ring gear can be selected within the two materials : Powder metal(Type: 22JXF3K), Metal(Type: 22JXE3K)

● 外形和安装尺寸 Dimensions



● 电动机主要技术参数 Motor Technical Data

电机型号 TYPE	额定电压 Rated voltage VDC	空载转速 No-load speed r/min	空载电流 No-load current mA	额定转速 Rated speed r/min	额定转矩 Rated torque mN.m	输出功率 Output power W	额定电流 Rated current mA	堵转力矩 Stall torque mN.m	堵转电流 Stall current A
22ZY38B-1230	12	3000	70	2200	3	0.7	135	9.3	0.26
22ZY38B-1260	12	6000	100	5000	3	1.56	250	15	0.87

● 齿轮减速电机主要技术参数 Gear Motor Technical Data

配置22ZY38B-1230直流电机 (22ZY38B-1230 DC Motor)

减速比 Reduction ratio	4	4.75	16	19	22	64	76	90	107	256	304
减速级数 Number of gear trains	1	1	2	2	2	3	3	3	3	4	4
减速器长度(L) Length(L) mm	14.4	14.4	17.8	17.8	17.8	21.5	21.5	21.5	21.5	25.2	25.2
空载转速 No-load speed r/min	750	632	188	158	136	47	39	33	28	12	10
额定转速 Rated speed r/min	550	463	138	116	100	34	29	24	21	8.6	7.2
额定转矩 Rated torque N.m	0.011	0.013	0.039	0.046	0.053	0.14	0.17	0.20	0.23	0.3	0.3
最大瞬间允许负载 Max. permissible load in a short time N.m	0.09	0.09	0.45	0.45	0.45	0.75	0.75	0.75	0.75	0.9	0.9

配置22ZY38B-1260直流电机 (22ZY38B-1260 DC Motor)

减速比 Reduction ratio	4	4.75	16	19	22	64	76	90	107	256	304
减速级数 Number of gear trains	1	1	2	2	2	3	3	3	3	4	4
减速器长度(L) Length(L) mm	14.4	14.4	17.8	17.8	17.8	21.5	21.5	21.5	21.5	25.2	25.2
空载转速 No-load speed r/min	1500	1263	375	316	273	94	79	67	56	23	20
额定转速 Rated speed r/min	1250	1035	313	263	227	78	66	56	47	20	16
额定转矩 Rated torque N.m	0.011	0.013	0.039	0.046	0.053	0.14	0.17	0.20	0.23	0.3	0.3
最大瞬间允许负载 Max. permissible load in a short time N.m	0.09	0.09	0.45	0.45	0.45	0.75	0.75	0.75	0.75	0.9	0.9

● 电动机特性图 Motor Characteristic Figure

