

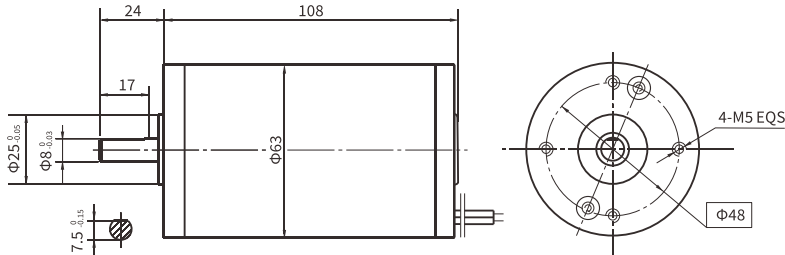
## 63ZY105永磁直流电动机

## 63ZY105 PMDC Motor

### 产品特点 and 用途 Description of The Product

直径63mm的永磁直流电动机，密封结构，适合于各种要求低噪音的使用场合。  
63MM OD PMDC motor, totally enclosed, used in occasions which require motors with low noise.

### 外形和安装尺寸 Dimensions



### 电动机主要技术参数 Motor Technical Data

| 电机型号<br>Type | 额定电压<br>Rated Voltage<br>VDC | 空载转速<br>No-load Speed<br>r/min | 空载电流<br>No-load Current<br>A | 额定转速<br>Rated Speed<br>r/min | 额定转矩<br>Rated Torque<br>mN.m | 输出功率<br>Output Power<br>W | 额定电流<br>Rated Current<br>A | 堵转力矩<br>Stall Torque<br>mN.m | 堵转电流<br>Stall current<br>A |
|--------------|------------------------------|--------------------------------|------------------------------|------------------------------|------------------------------|---------------------------|----------------------------|------------------------------|----------------------------|
| 63ZY105-2420 | 24                           | 2000                           | 0.25                         | 1600                         | 165                          | 30                        | 1.8                        | 760                          | 7.3                        |
| 63ZY105-2430 | 24                           | 3000                           | 0.35                         | 2400                         | 180                          | 45                        | 2.2                        | 790                          | 11.2                       |
| 63ZY105-2450 | 24                           | 5000                           | 0.50                         | 4000                         | 230                          | 90                        | 6.0                        | 920                          | 15.5                       |

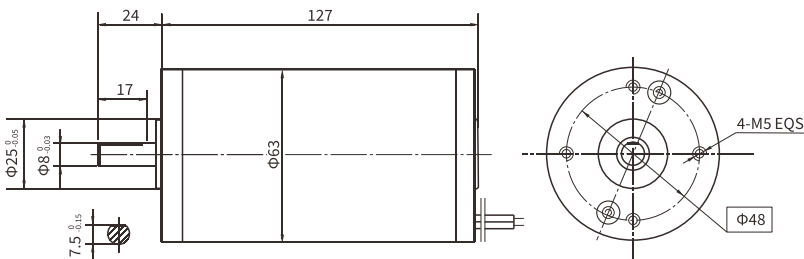
## 63ZY125永磁直流电动机

## 63ZY125 PMDC Motor

### 产品特点 and 用途 Description of The Product

直径63mm的永磁直流电动机，密封结构，适合于各种要求低噪音的使用场合。  
63MM OD PMDC motor, totally enclosed, used in occasions which require motors with low noise.

### 外形和安装尺寸 Dimensions



### 电动机主要技术参数 Motor Technical Data

| 电机型号<br>Type | 额定电压<br>Rated Voltage<br>VDC | 空载转速<br>No-load Speed<br>r/min | 空载电流<br>No-load Current<br>A | 额定转速<br>Rated Speed<br>r/min | 额定转矩<br>Rated Torque<br>mN.m | 输出功率<br>Output Power<br>W | 额定电流<br>Rated Current<br>A | 堵转力矩<br>Stall Torque<br>mN.m | 堵转电流<br>Stall current<br>A |
|--------------|------------------------------|--------------------------------|------------------------------|------------------------------|------------------------------|---------------------------|----------------------------|------------------------------|----------------------------|
| 63ZY125-2430 | 24                           | 3000                           | 0.5                          | 2500                         | 265                          | 65                        | 4.6                        | 950                          | 15.2                       |
| 63ZY125-2435 | 24                           | 3500                           | 0.8                          | 2800                         | 320                          | 95                        | 6.0                        | 1100                         | 19.3                       |
| 63ZY125-2440 | 24                           | 4000                           | 1.2                          | 3200                         | 450                          | 150                       | 9.0                        | 1200                         | 22.6                       |