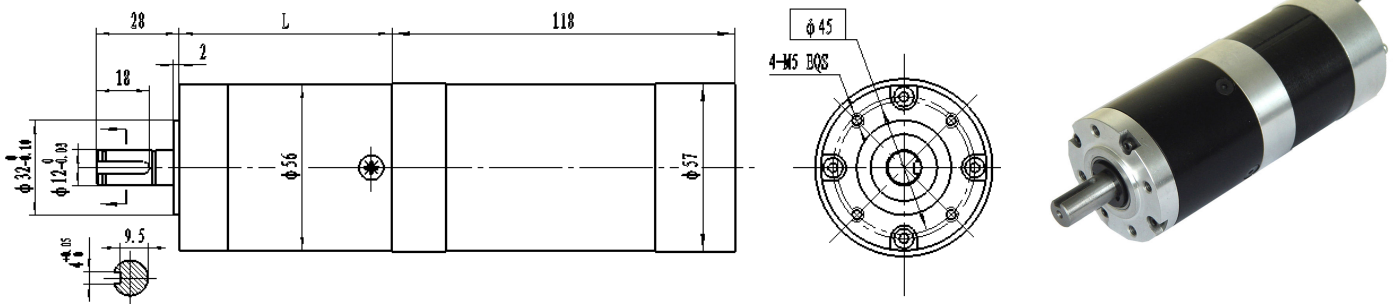


# 无刷直流行星齿轮电机 BRUSHLESS DC PLANETARY GEAR MOTOR

## 56JX300K/57ZWN118

Φ56 加强型减速器, 允许转矩范围: 2N.m~30N.m  
56mm OD Reinforced Gearbox,  
Permissible Load Range: 2N.m~30N.m

### ● 外形和安装尺寸 Dimensions



### ● 无刷电动机主要技术参数 Brushless Motor Technical Data

| 电机型号<br>TYPE  | 额定电压<br>Rated voltage<br>VDC | 空载转速<br>No-load speed<br>r/min | 空载电流<br>No-load current<br>A | 额定转速<br>Rated speed<br>r/min | 额定转矩<br>Rated torque<br>N. m | 额定电流<br>Rated current<br>A | 重量<br>Weight<br>Kg |
|---------------|------------------------------|--------------------------------|------------------------------|------------------------------|------------------------------|----------------------------|--------------------|
| 57ZWN118-2440 | 24                           | 4000                           | 0.8                          | 3000                         | 0.80                         | 14                         | 1.2                |
| 57ZWN118-3640 | 36                           | 4000                           | 0.8                          | 3000                         | 0.80                         | 10                         | 1.2                |

### ● 无刷行星齿轮减速电机主要技术参数 Brushless Gear Motor Technical Data

配置 57ZWN118-2440 电机的完整型号: 56JX300K□G12J28/57ZWN118-2440 (键槽轴, 直径 12mm, 长度 28mm, □内填写减速比)

| 减速比 Reduction ratio                                    | 3.6  | 4.25 | 13  | 15  | 18  | 27  | 32  | 47  | 55  |
|--|------|------|-----|-----|-----|-----|-----|-----|-----|
| 减速级数 Number of gear trains                             | 1    | 1    | 2   | 2   | 2   | 2   | 2   | 3   | 3   |
| 减速器长度(L) Length(L) mm                                  | 53   | 53   | 53  | 53  | 53  | 53  | 53  | 64  | 64  |
| 空载转速 No-load speed r/min                               | 1111 | 941  | 308 | 267 | 222 | 148 | 125 | 85  | 73  |
| 额定转速 Rated speed r/min                                 | 833  | 706  | 231 | 200 | 167 | 111 | 94  | 64  | 55  |
| 额定转矩 Rated torque N. m                                 | 2.6  | 3.1  | 8.4 | 9.7 | 12  | 17  | 21  | 27  | 30  |
| 最大瞬间允许负载<br>Max. permissible load in a short time N. m | 12   | 12   | 50  | 50  | 50  | 50  | 50  | 100 | 100 |

配置 57ZWN118-3640 电机的完整型号: 56JX300K□G12J28/57ZWN118-3640 (键槽轴, 直径 12mm, 长度 28mm, □内填写减速比)

|  |      |      |     |     |     |     |     |     |     |
|--|------|------|-----|-----|-----|-----|-----|-----|-----|
| 减速比 Reduction ratio                                    | 3.6  | 4.25 | 13  | 15  | 18  | 27  | 32  | 47  | 55  |
| 减速级数 Number of gear trains                             | 1    | 1    | 2   | 2   | 2   | 2   | 2   | 3   | 3   |
| 减速器长度(L) Length(L) mm                                  | 53   | 53   | 53  | 53  | 53  | 53  | 53  | 64  | 64  |
| 空载转速 No-load speed r/min                               | 1111 | 941  | 308 | 267 | 222 | 148 | 125 | 85  | 73  |
| 额定转速 Rated speed r/min                                 | 833  | 706  | 231 | 200 | 167 | 111 | 94  | 64  | 55  |
| 额定转矩 Rated torque N. m                                 | 2.6  | 3.1  | 8.4 | 9.7 | 12  | 17  | 21  | 27  | 30  |
| 最大瞬间允许负载<br>Max. permissible load in a short time N. m | 12   | 12   | 50  | 50  | 50  | 50  | 50  | 100 | 100 |