

60JB50K/60ZY105

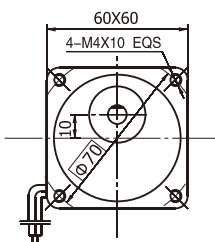
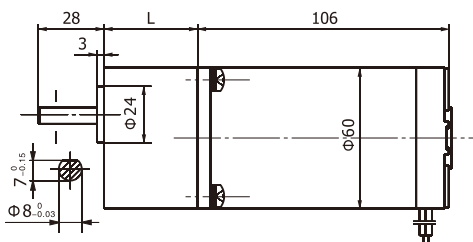
允许转矩范围: 5.0N.m
Permissible Load Range: 5.0N.m

● 产品特点和用途 Description of The Product

□60mm的一体式齿轮减速器, 允许负载5.0N.m。合金结构钢齿轮, 全部滚动轴承的配置。

□60mm integrated gearbox, with rated torque up to 5.0 N.m, alloy constructional steel gears, all equipped with ball bearings.

● 外形和安装尺寸 Dimensions



● 电动机主要技术参数 Motor Technical Data

电机型号 TYPE	额定电压 Rated voltage VDC	空载转速 No-load speed r/min	空载电流 No-load current A	额定转速 Rated speed r/min	额定转矩 Rated torque N.m	输出功率 Output power W	额定电流 Rated current A	堵转转矩 Stall torque N.m	堵转电流 Stall current A
60ZY105-2420	24	2000	0.25	1600	0.165	30	1.8	0.76	7.3
60ZY105-2430	24	3000	0.35	2400	0.180	45	2.2	0.79	11.2

● 齿轮减速电机主要技术参数 Gear Motor Technical Data

配置60ZY105-2420直流电机 (60ZY105-2420 DC Motor)

减速比	Reduction ratio	3	5	6	7.5	9	10	12.5	15	20	25	30	36	40	50
减速级数	Number of gear trains	2	2	2	2	2	2	2	2	3	3	3	3	3	3
减速器长度(L)	Length(L) mm	32	32	32	32	32	32	32	32	40	40	40	40	40	40
空载转速	No-load speed r/min	667	400	333	267	222	200	160	133	100	80	67	56	50	40
额定转速	Rated speed r/min	533	320	266	213	177	160	128	106	80	64	53	44	40	32
额定转矩	Rated torque N.m	0.40	0.66	0.8	1.0	1.2	1.3	1.6	2.0	2.4	3.0	3.6	4.3	4.8	6.0
最大瞬间允许负载	Max. permissible load in a short time N.m	2.5	2.5	2.5	2.5	2.5	2.5	2.5	2.5	8.0	8.0	8.0	8.0	8.0	8.0
转 向	Direction of rotation	CW	CW	CW	CW	CW	CW	CW	CW	CCW	CCW	CCW	CCW	CCW	CCW

配置60ZY105-2430直流电机 (60ZY105-2430 DC Motor)

减速比	Reduction ratio	3	5	6	7.5	9	10	12.5	15	20	25	30	36	40	50
减速级数	Number of gear trains	2	2	2	2	2	2	2	2	3	3	3	3	3	3
减速器长度(L)	Length(L) mm	32	32	32	32	32	32	32	32	40	40	40	40	40	40
空载转速	No-load speed r/min	1000	600	500	400	333	300	240	200	150	120	100	83	75	60
额定转速	Rated speed r/min	800	480	400	320	266	240	192	160	120	96	80	69	62	48
额定转矩	Rated torque N.m	0.43	0.72	0.87	1.1	1.3	1.4	1.8	2.1	2.6	3.2	3.9	4.7	5.0	5.0
最大瞬间允许负载	Max. permissible load in a short time N.m	2.5	2.5	2.5	2.5	2.5	2.5	2.5	2.5	8.0	8.0	8.0	8.0	8.0	8.0
转 向	Direction of rotation	CW	CW	CW	CW	CW	CW	CW	CW	CCW	CCW	CCW	CCW	CCW	CCW

● 电动机特性图 Motor Characteristic Figure

